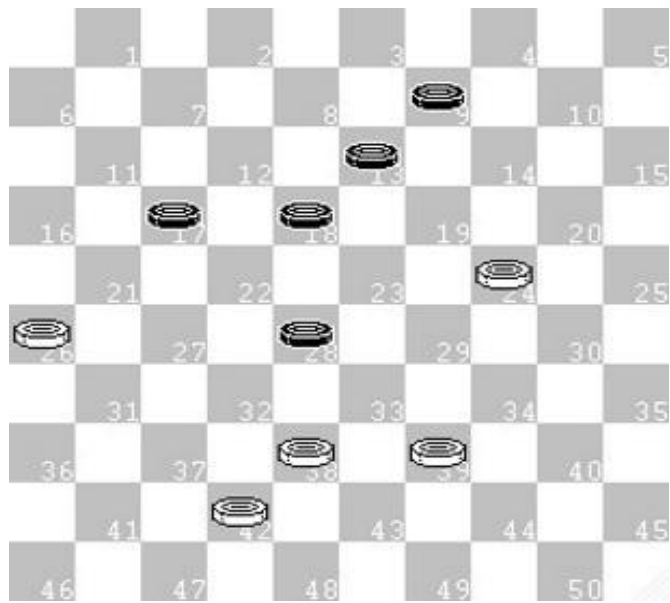
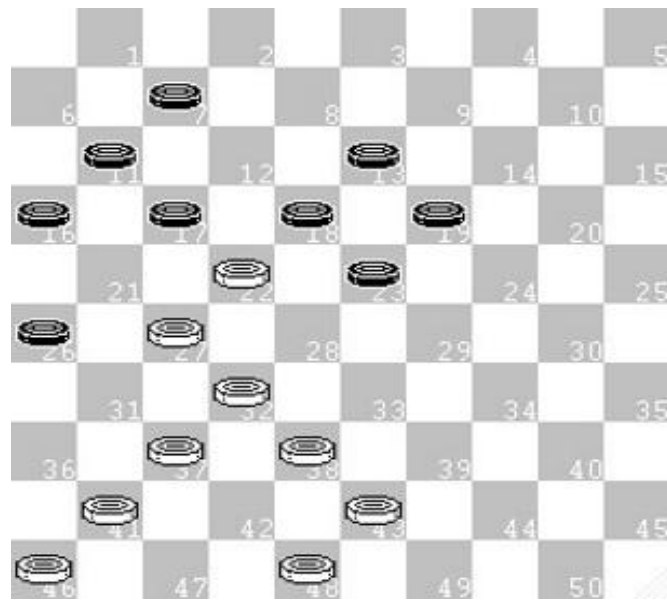


Les coups classiques par ordre alphabétique



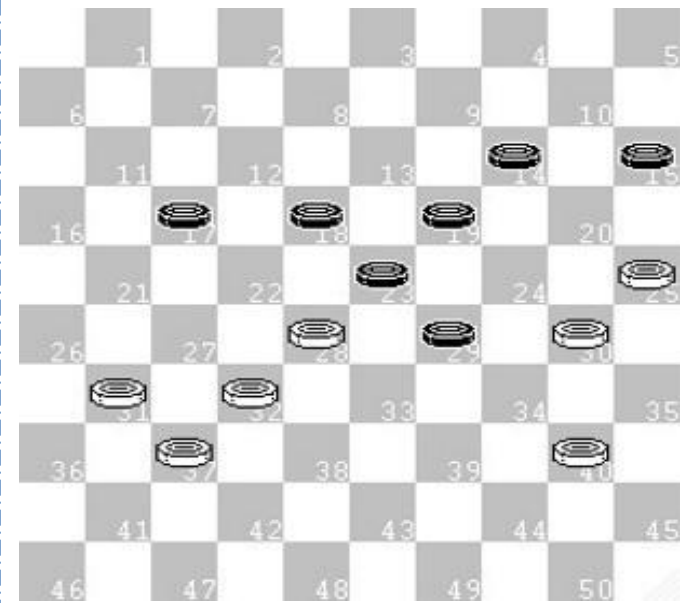
African

1



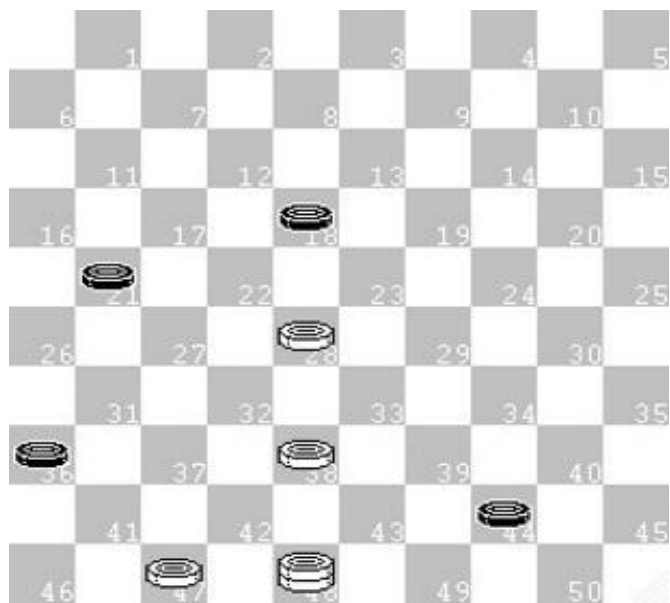
Aiguille

2



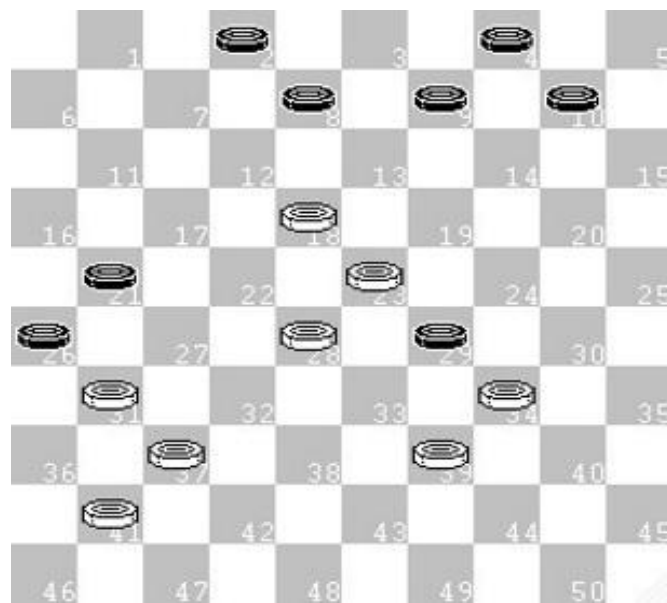
Arnoux

3



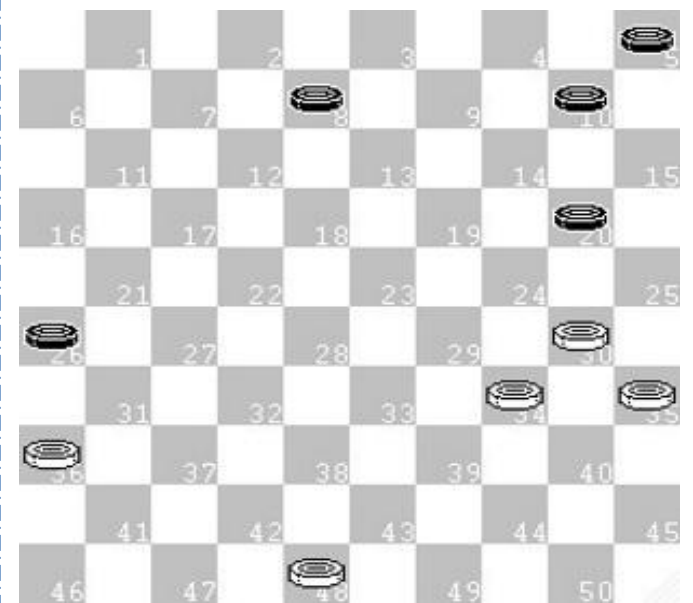
Arrêt

4



Arthupel

5



Assommoir

6

1. 38-32 28x48
2. 26-21 48x19
3. 21x3

1. 27-21 17x28
2. 32-27 26x17
3. 27-22 18x27
4. 37-32 28x37
5. 41x1

1. 40-34 29x40
2. 30-24 19x30
3. 28x10 15x4
4. 25x45

Africain

1

Aiguille

2

Arnoux

3

1. 28-23 18x29
2. 47-41 36x47
3. 48-26 47x33
4. 26x50

1. 23-19 29x40
2. 39-34 40x29
3. 18-13 9x18
4. 37-32 26x46
5. 28-23 46x28
6. 23x3 28x14
7. 3x16 1-0

1. 23-18 12x32
2. 27x38 47x8
3. 21x5 1-0

Arrêt

4

Arthupel

5

Assommoir

6



Vers 7 à 12